



For a safer world

FLATSCAN DF80

X-RAY SCANNER FOR POSTMORTEM EXAMINATION



Single View



Dual View

The Flatscan DF-80 is a revolutionary whole body digital x-ray system, designed specifically for forensic screening. DV series allows front to back and lateral imaging acquisition without any movement of the body. This portable system is self-contained and does not require a special x-ray room to operate in.



TECHNICAL SPECIFICATIONS

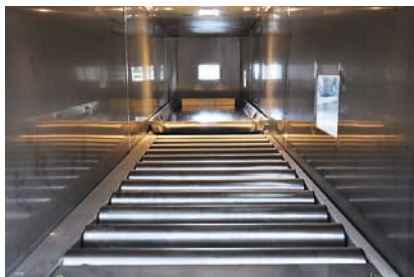
HIGH RESOLUTION DIGITAL TECHNOLOGY

The Flatscan **DF80** is a portable system designed to assist post-mortem examinations by using digital image analysis, allowing the forensic authorities great flexibility and precision to identify the cause the death. It can be used in a variety of settings which do not need x-ray shielding and the system can easily be cleaned and moved.



Easy to operate central control

The Flatscan **DF80** is equipped with a shielded tunnel, this creates a safe operating condition and avoids the construction of a shielded room, reducing costs and installation space.



Tunnel

The Flatscan **DF80** uses digital technology and a high performance X-ray generator with dose control, optimizing the exposure time necessary for each part of the inspected body. Image acquisition is accomplished by a digital high resolution flat panel and is processed by a high performance workstation, providing DICOM images with a high level of detail, assisting in post-mortem analysis and report generation.

GENERAL SPECIFICATIONS

- Tunnel Size 800mm x 800mm
- Dimensions **SV:** 4760mm (L) x 1480mm (W) x 1950mm (H)
DV: 4902mm (L) x 1770mm (W) x 2028mm (H)
- Weight **SV:** 1650kg
DV: 3000kg
- Roller table height 800mm (configurable)
- Maximum load weight 250kg
- Storage Temperature/ Humidity..... 0°C a 40°C / 5% a 80%
- Operating Temperature/ Humidity 10°C a 35°C / 20% a 55%

TECHNICAL SPECIFICATIONS

- Detector panel Flat-panel Digital X-Ray Detector
- Energy Conversion Direct conversion
- Pixel size 168µm
- Contrast resolution 14bits
- Image resolution 2560 x 2560
- Image acquisition time 4.5 s after X-Ray exposure
- X-Ray voltage 40 a 125kV
- Tube current 50 a 630mA
- X-ray tube High resolution with rotating anode

VIDEO SPECIFICATIONS

- Main Monitor 24" Widescreen Color LCD
- Main Monitor resolution 1920 x 1200
- Remote Monitor 42" Widescreen Color LCD

ELECTRICAL SPECIFICATIONS

- Power supply 220 Vac or 380 Vac three-phase
- Apparent Power 67kVA

OPERATING FEATURES

- Image export via USB or network connection in DICOM and BMP file formats;
 - Self diagnostic function, for maintenance easiness;
 - Operation password protected console near to equipment;
 - Visual signaling during X-ray emissions;
 - Digital zoom provided by image processing software;
 - Automatic adjust of brightness and contrast;
 - Angle and dimensions measuring function;
 - Ability to print images in paper of radiographic film;
 - Integrated digital scale for body weighing;
 - Removable rolling table, allowing easier cleaning;
 - Integrated weighing scale
 - Internal finish stainless steel
 - Tunnel removable for cleaning
 - Movements of the tube, detector and body frame controlled by software
- Only in Dual View:**
- Equipment with unique automatic positioning system controlled by the software allow AP and lateral image acquisition without any movement of the body.

DIMENSIONS

Single View



Dual View

"Technical Specifications subject to change without notice."